



THE HARBOUR CLUB

WINE  
TREASURES





# THE HARBOUR CLUB

## White Wines

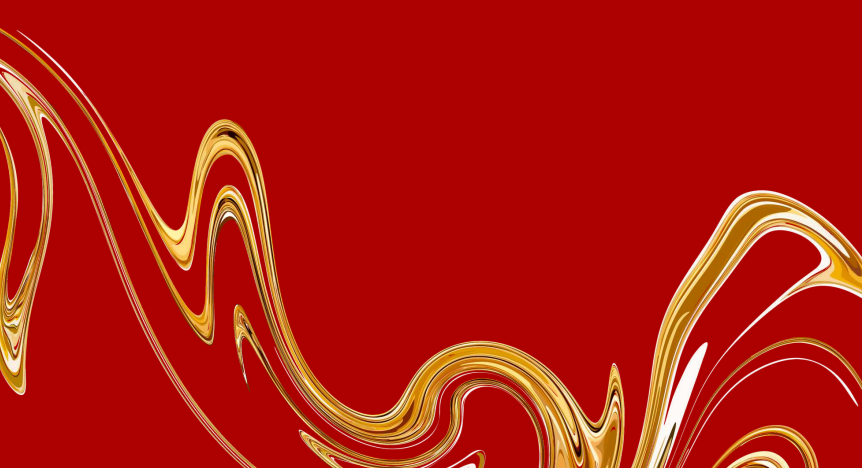


<b>SAVENNIERES CLOS SAINT YVES CHENIN BLANC</b> DOMAINE DES BAUMAUD, LOIRE COMPLEX - MEDIUM BODY - FRESH	55
<b>RIESLING TROCKEN HAAG</b> FRITZ HAAG, MOSEL FRESH - LIGHT - MINERAL	30
<b>SOAVE CLASSICO LA PIEROPAN</b> PIEROPAN, VENETO FULL BODY - INTENSE - COMPLEX	50
<b>CHENIN BLANC ELODIE GABRIELSKLOOF</b> GABRIELSKLOOF, SWARTLAND DRY - OAKED - MEDIUM BODY	60
<b>KISTLER CHARDONNAY LE NOISETIERS</b> KISTLER, SONOMA VALLEY FLORAL - DELICATE - COMPLEX	140
<b>BORGOGNO DERTHONA - WHITE BAROLO</b> BORGOGNO, PIEMONTE FULL BODIED - COMPLEX - SAVORY	80
<b>PENFOLDS BIN RIESLING</b> PENFOLDS, EDEN VALLEY ELEGANT - FRESH - BALANCED	65

## Champagne



<b>FLEUR DE MIRAVAL</b> ERI EXCLUSIVEMENT ROSÉ, CHAMPAGNE FRUITY - FRESH - ELEGANT	200
<b>COMTES DE CHAMPAGNE - TAITTINGER</b> TAITTINGER, CHAMPAGNE BRIOCHE - CRISPY - COMPLEX	235





# THE HARBOUR CLUB

## Red Wines



<b>CHATEAU DUBARD BEL AIR</b> PUISSEGUIN-ST.-EMILION, BORDEAUX ELEGANT - STRUCTURED - REFINED	40
<b>LALANDE DE POMEROL</b> CHÂTEAU LA CROIX ROMANE, BORDEAUX ELEGANT - INTENSE - SMOOTH	50
<b>RULLY 1ER CRU</b> JAEGER DEFAIX, BOURGOGNE LIVELY - ROUND - ELEGANT	60
<b>CHATEAU PLINCE POMEROL</b> POMEROL, BORDEAUX ELEGANT - MEDIUM BODY - CLASSIC	90
<b>AMARONE RISERVA CA FLORIAN TOMASSI</b> TOMMASI, VENETO POWERFUL - INTENSE - ICON	135
<b>PESQUERA RESERVA</b> ALEJANDRO FERNANDEZ, RIBERA DEL DUERO SILKY - FRUITY - ELEGANT	60
<b>PINOT NOIR VILLA WOLF</b> VILLA WOLF, PFALZ JUICY - ROUND - SMOOTH	36
<b>SPÄTBURGUNDER SHELTER WINERY</b> SHELTER WINERY, BADEN SILKY - JUICY - ELEGANT	40
<b>CORRALILLO MATETIC SYRAH</b> MATETIC, SAN ANTONIO VALLEY POWERFUL - INTENSE - JUICY	35
<b>MERLOT VERGELEGEN</b> VERGELEGEN, STELLENBOSCH FRUITY - SOFT - SMOOTH	50





# THE HARBOUR CLUB

